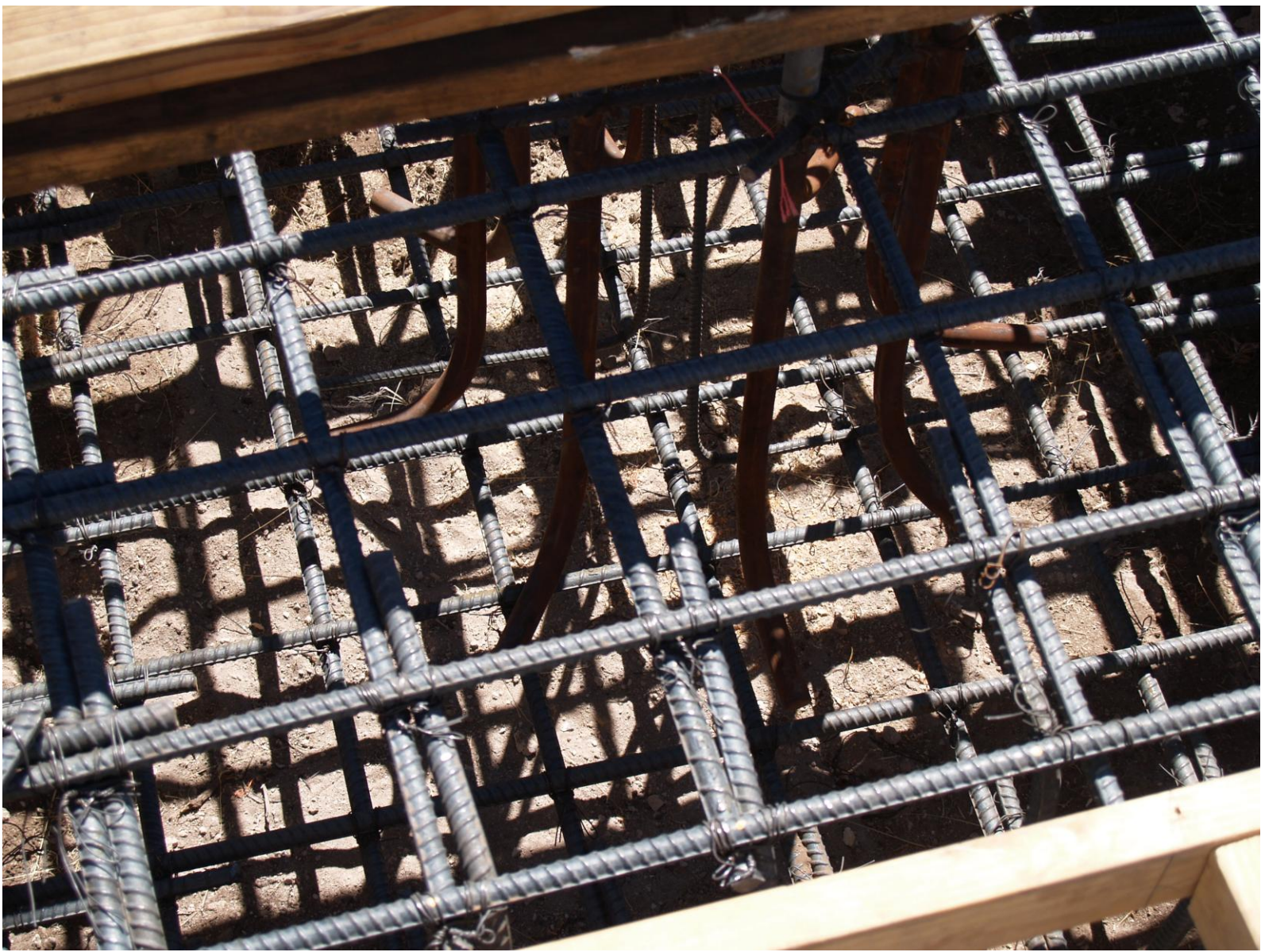


SKYSTREAM INSTALLATION





Mat Foundation: 6' x 6' square with a depth of 3'



Reinforcing Bars



“J” Bolts securely locked in position



Mat Foundation and Junction Box



Leveling Nuts



Installing Hinge Plate



Tighten the Hinge Plate Nuts



Connecting Tower to Hinge
Plate



Connecting Tower to Hinge Plate



Tighten Bolts and Nuts



4.25" from top of Hinge Plate to top of anchor bolt



Connecting Gin Pole to
Tower Base



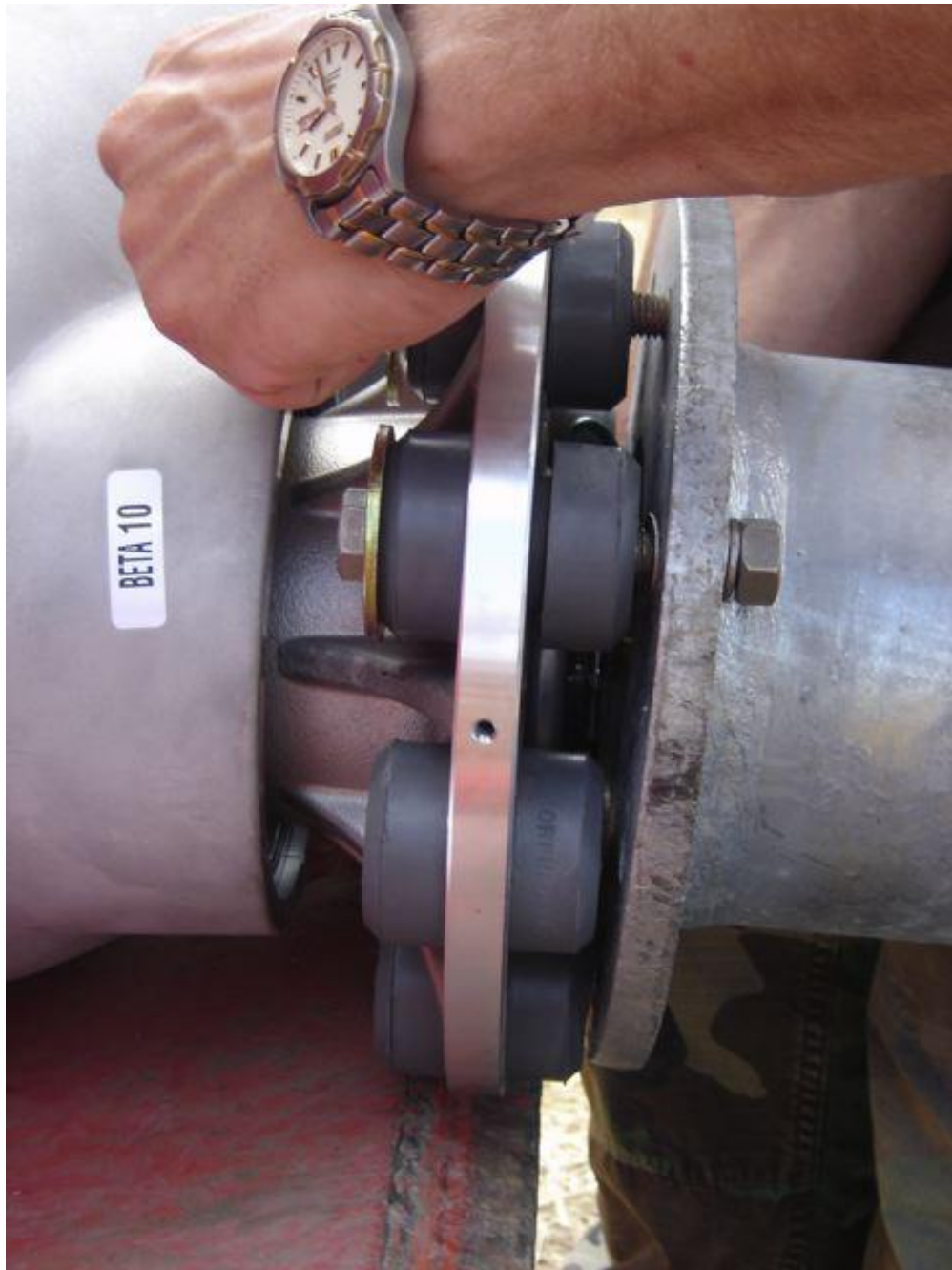
Gin Pole attached



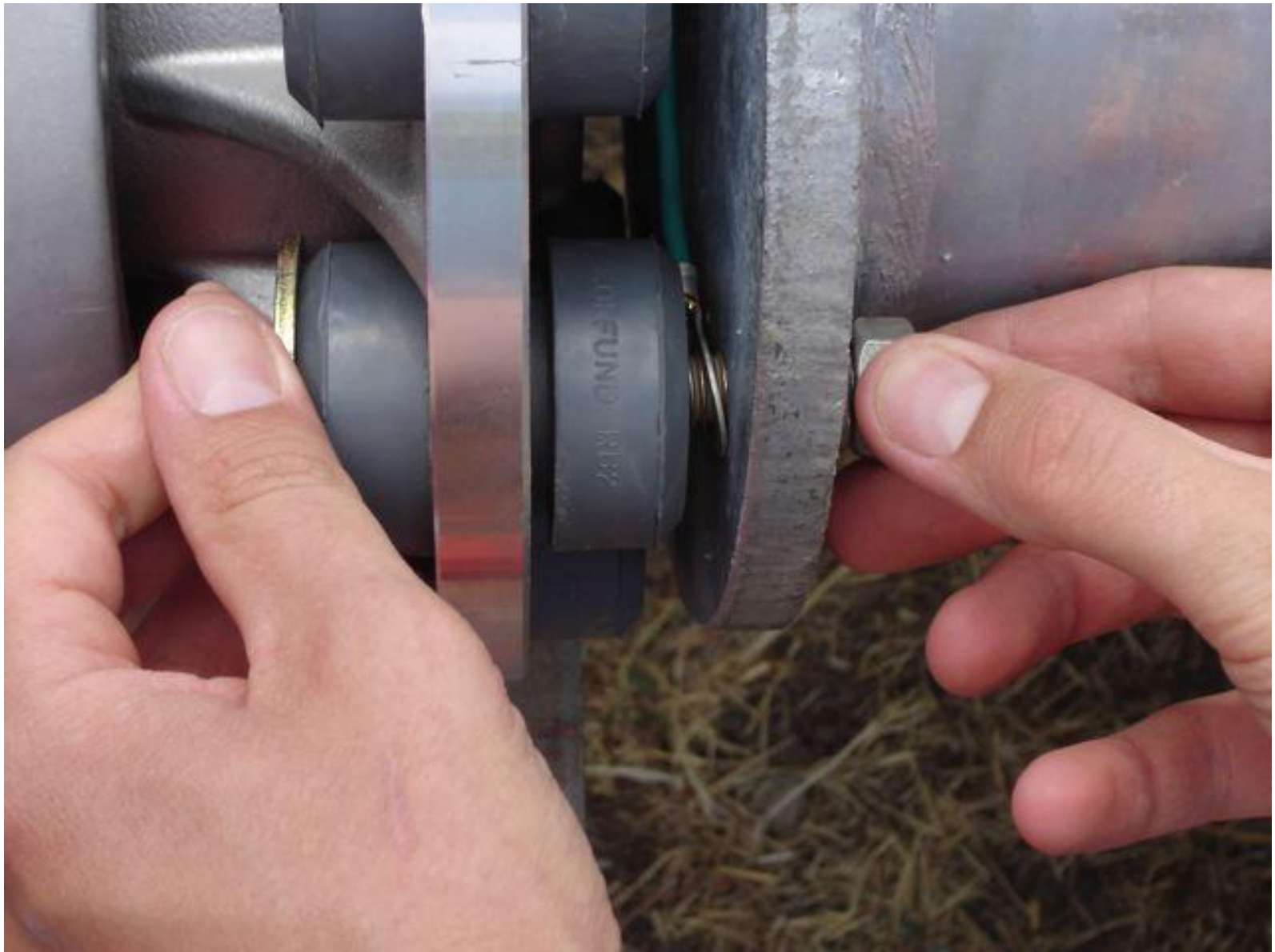
Ready to mount Skystream
To the Tower



Placing vibration isolators



Connecting Skystream to
The Tower



Grounding Skystream to the Tower



Tighten the Bolts



Ready to install the blades



Assembling Blades and Hub



Blades ready



Placing the blades



Installing the shield



Assembling Nose Cone



Ready to raise the Tower



Raising the Tower



Tower in place



Leveling the Tower





Removing Hinge Plate



Tower Leveled



1.5"



6" from foundation base to
Tower base



6" from foundation base to
Tower base



**Connecting Skystream
To Breaker Box**



Installation Completed