

Xantrex Battery Monitor



Battery Status Information at a Glance

The Xantrex Battery Monitor uses sophisticated microprocessor technology to provide complete battery status information for your battery. A simple display shows volts, amps, amp hours consumed, and operating time remaining.

An optional communications kit is available that contains hardware and software to enable battery monitoring from a Windows-based laptop. The included Windows 98/ME/2000/XP software is a powerful tool to analyze the performance of your battery system and remotely control the Battery Monitor. The software can simultaneously display real-time data on all parameters displayed on the Battery Monitor's LCD screen. It can also log, save, and graphically display historical battery performance information, such as the number of charge/recharge cycles. These features provide owners and technicians with a wealth of information to easily troubleshoot battery issues while ensuring peak battery performance.

Product Features

- ▶ Digital Numeric Display - LCD display shows numeric read out of volts, amps, amp-hours and time remaining
- ▶ Easy to read LCD bar graph shows state of charge
- ▶ Splash proof panels allow for outdoor mounting and hands free operation
- ▶ Displays key historical battery information such as charge efficiency, deepest discharge, and average discharge
- ▶ Compatible with 12 and 24 volt DC systems
- ▶ Works with any battery type
- ▶ Includes DC shunt
- ▶ One year warranty
- ▶ CE -mark

Accessories

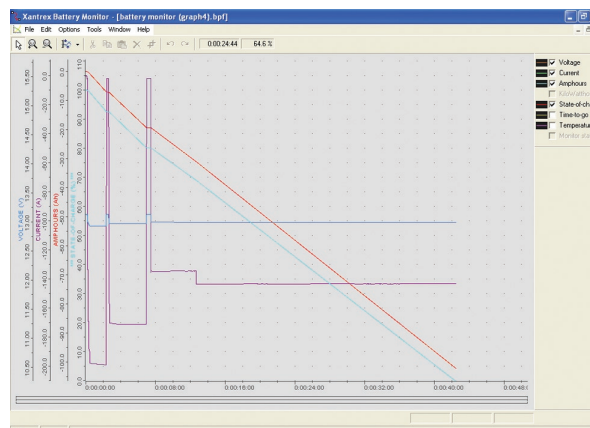
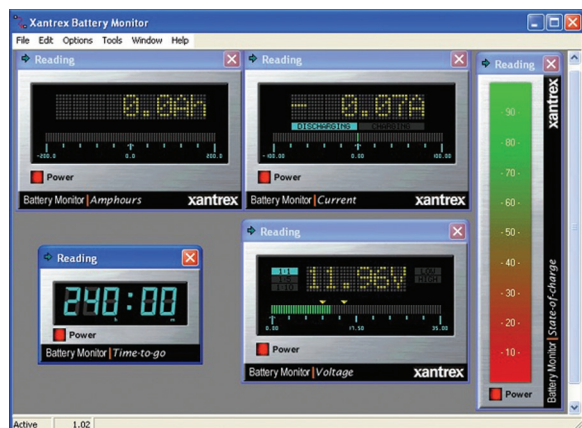
- ▶ Color-coded, twisted pair connection kit (eases installation). Available in 32 or 50 foot lengths
- ▶ Temperature sensor with connector cable in 32 or 65 foot lengths
- ▶ Communication kit, containing an isolated RS232 interface box, 6 foot interface cable and Windows™ software

Xantrex Technology Inc.

Headquarters
8999 Nelson Way
Burnaby, British Columbia
Canada V5A 4B5
800 670 0707 Toll Free
604 420 1591 Fax

5916 195th Street NE
Arlington, Washington
USA 98223
800 446 6180 Toll Free
360 925 5144 Fax3

Xantrex Battery Monitor



The Windows software included with the optional communications kit can display real-time battery status data and graphically display historical battery performance information.

Electrical Specifications

Voltage Measurement	0-35.0 VDC (+/-0.01 V resolution)
Current Measurement	-500 - 500 A
Amp-Hour Measurement	High range +/- 200-1,999 Ah (1 hour resolution)
Time Remaining Measurement	Low range 0 - 100 hours (0.1 hour resolution) High range 100 - 240 hours (1 hour resolution)
Battery Capacity Range	20 - 2000 Ah
Operating Temperature Range	0- 50 °C
Accuracy	Voltage +/- 0.3% of reading Amperage +/- 0.4% of reading

General Specifications

Installation	Flush mount
Front panel	2.56 x 2.56"
Body diameter	2.05"
Total Depth	2.83"
Weight	3.0 oz (86 g)
Warranty	One year
Part numbers	854-2015-00 Xantrex Battery Monitor 854-2019-01 Xantrex Battery Monitor Communication Kit 854-2020-01 Xantrex Connection Kit - 32 ft (10m) 854-2021-01 Xantrex Connection Kit - 50 ft (15m) 854-2022-01 Xantrex Temperature Kit -32 ft (10m) 854-2023-01 Xantrex Temperature Kit -65 ft (20m)

Note: Specifications subject to change without notice.