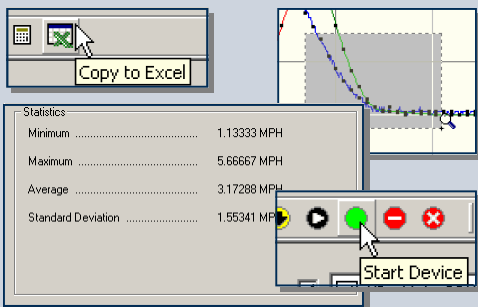


FEATURES

- ❖ Durable housing for logger
- ❖ 3-cup anemometer
- ❖ 0 to 100 MPH range
- ❖ 0.34 mph resolution at 10 second sampling rate
- ❖ ±2.5% calibrated accuracy over 10 to 100 mph
- ❖ User-friendly
- ❖ High speed download

SOFTWARE

MadgeTech's Data Recorder Software is an easy to use Windows-based software package that allows the user to effortlessly collect, display and analyze data. A variety of powerful tools allow you to examine, export, and print professional looking data with just a click of the mouse.



The WIND110 is a complete system to accurately measure and record wind speed. The self contained, low cost wind speed recording system comes complete with a data logger, weatherproof enclosure, three cup anemometer and all the necessary cabling to quickly get up and running. The logger can record up to 16,383 readings and the storage medium is non-volatile, solid state memory, providing maximum data security even if the battery becomes discharged. The device can be started and stopped directly from a computer using our user-friendly software.



SPECIFICATIONS

| | |
|-------------------------------|---|
| Measurement Range: | 0 to 100 mph (0 to 45 m/s) |
| Resolution: | 0.34 mph at 10 second reading interval |
| Accuracy: | ±2.0 mph from 0 to 10 mph ±2.5% of reading from >10 to 100 mph |
| Memory: | 16,383 readings with software selectable memory wrap feature |
| Reading Interval: | 1 reading every second to 1 every 12 hours |
| Data Format: | User defined engineering units (mph by default) |
| Start Time: | Software programmable start time and date, up to six months in advance |
| Software: | Windows 95/98/ME/NT/2000/XP based software |
| Computer Interface: | PC serial or RS232C COM (Interface cable required); 57,600 baud |
| Anemometer Dimensions: | 2.1" height x 7.53" diameter (mount post not included) (54mm height x 192mm dia.) |
| Housing Dimensions: | 2.9" x 5.8" x 1.5" (74mm x 148mm x 39mm) |

*Specifications are subject to change without notice. Specific warranty and remedy limitations apply.

ORDERING INFORMATION

ASK ABOUT OUR OTHER DATA RECORDERS

Model

WIND110

Description

Data logger with weatherproof enclosure, 3 cup anemometer, required cabling and IFC110 interface package

Temperature
Humidity
Pressure
Bridge/Strain

Current
Pulse/Event/State
Level
Shock/Vibration
Submersible